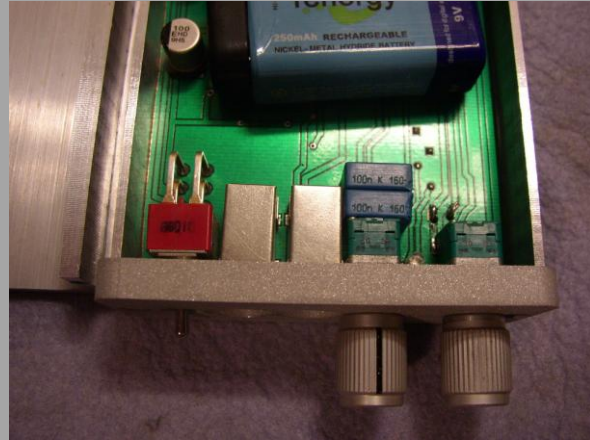


Presenting Our Latest Incarnation of LISA III

The L3 Reference Standard

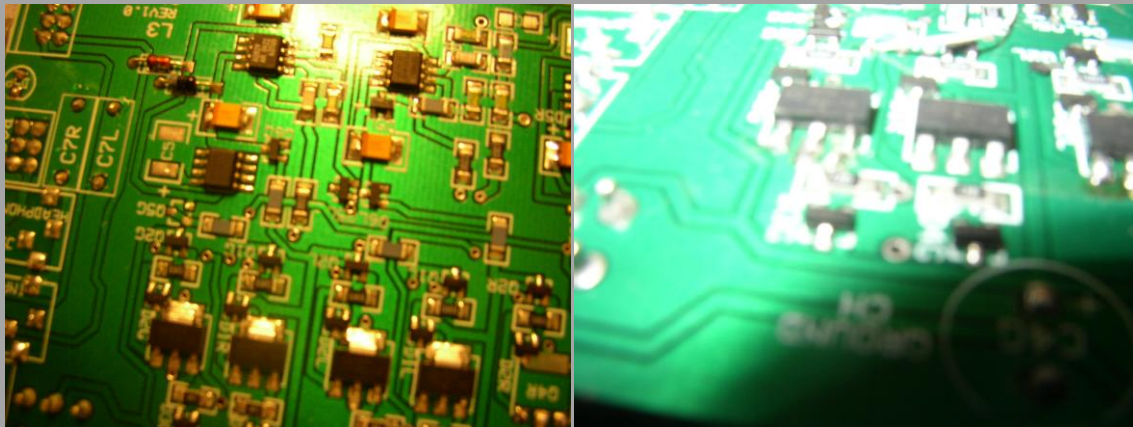
Personal Portable Headphone Amplifier



We here at TRIAD Audio have been getting many requests for a more flexible edition of our Legendary LISA III Headphone Amplifier. TRIAD Audio considers the Desires of all our Customers. We design products that embody these wishes. Moreover, I myself love Music and it is in the service of music is the reason I designed my own Amplifiers. As an Audiophile and music lover I know what you would Desire to have as your Personal Portable Headphone Amplification, because I desired the same thing you folks are requesting and went ahead and made one for my own in several versions. The L3 is the latest in a long legacy of pocket Amps that Define the Art In compact portable Amplification. The L3 is a warm full sounding Amplifier combines this with the Holistic 3Dimensional soundstage and Delineation of detail so precise that you can sense the Air of the Recordings environments. L3 redefines Personal portable Headphone Amplifiers

I present to you my L3 for your Companion Head-Amp. THIS NEW Amplifier from TRIAD Audio takes the Legendary LISA III circuit and Packages it into a smaller more Versatile Amp. First, we replaced the 1/4" Headphone jack with a 1/8" Stereo Mini jack to use IEM type Headphones. In addition, another 1/8" Mini jack Input located next to the headphone Output and connected to the rear mounted RCA Inputs. Also located upon the rear is a gain switch to accommodate high sensitivity IEM Type Headphones. A DC Coaxial power connector to allow operation and battery recharging from the AC power also provided.

The L3 takes the previous LISA III to the next level with circuitry enhancements that obtains the absolute highest performance obtainable from Our Buffered Op-Amp topology. The Amplifier Circuitry upgraded in several areas to provide more linear output current allowing operation into load Impedances other headphone Amplifiers sputter and fuss at. The L3 uses Newly Designed Output Transistors By ON Semiconductor. These fantastic devices utilize ON Semiconductor's Latest e2 Power Edge Technology. These transistors feature low saturation Voltage and are miniature surface mount. The ultra low (VCE (sat) provides improved performance into difficult loads by Virtue of High current gain and allow more Efficient operation Saturation voltage (VCE (sat) and high current gain capability. These are designed for use in low voltage, high speed switching applications where affordable efficient energy control is important. Substantial dynamic Impact completely preserving every nuance and detail of the music. With all these Improvements in power and output stages, it makes sense the voltage gain circuitry be Also improved? How do you improve upon perfection? The original LISA III has utilized many Unique and proprietary techniques to extract the utmost from the humble monolithic IC Op-Amp. Indeed a difficult task it is to improve upon this however, there remains one obscure technique described by [Walt Jung](#) for ANALOGE DEVICES, which reduces distortion in the Op-Amp by 10dB.



The logical evolution of the Fine LISA III Line is Our L3 described hear. Based upon the LISA III platform the L3 extends the Level of musicality for Personal Portable Head-Amps. In addition to providing State of the Art Technical sophistication The L3 housed in Complete Elegance of Custom machined Aluminum case Finished to Perfection by Master artisan.



THE NEW LISA RS should be Available about

summer or early winter 2010. Order Online from Our website or, if you prefer, an Authorized TRIAD Audio Distributor. Availability will be Limited at first...

L- III Personal Headphone Amplifier

Technical Specifications

| | |
|---|---|
| Device Type | Solid State (IC Op-Amp/Buffer Discrete hybrid) |
| Class of Operation | DYN-O-BIAS II> Dynamically biased non Switching output stage.. |
| Frequency Response | Frequency Response @ 100 mW Into a 45 Ohm Load. D.C.-1.6 MHz. Within +0 to - 3 dB D.C.- 600 KHz. Within +0 to - 1 dB.. |
| Signal-to-Noise Ratio | Signal to Noise ratio relative to Rated Power Output. Input Shorted > 100 dB “A” Weighted.. |
| Total Harmonic Distortion | Typical Total Harmonic Distortion (THD) @ rated Output 15–30,000Hz @ 15 Hz. ___ @ 1KHz. ___ @ 30 KHz. < 0.09% ___ < 0.04% ___ < 0.05% |
| Stereo Crosstalk | >95dB @ 1KHz.. |
| Gain | (2.12) 6.5dB.. Default setting |
| Input Impedance | 50K ohms /100pF.. |
| Input Sensitivity | 200mV to 3.0Vrms.. |
| Output Impedance | less than 0.3 Ohms DC-20KHz & < than 1 ohm @ 200KHz.. |
| Output Voltage | 5.0 Volts RMS from DC- 500KHz @ 1,000 Ohms.. |
| Minimum Continuous sine wave Power Output Per channel from 20-20,000Hz With less than 0.1% THD + Noise | AC Adaptor 470 mW_ 14 Ohms_ 270 mW 700 mW_ 45 Ohms_ 400 mW 200 mW_ 200 Ohms_ 100 mW .. |
| Inputs/Outputs | (1) 1/8 Mini Input, (1) 1/8 Inch headphone output (1) Stereo RCA Pair... |
| Operating Voltage | 20-24 VDC@50mA.. |
| Power Consumption | <30 mA Quiescent.. |
| Chassis Dimensions | Inches 4.4 (L) x 2.75 (W) x 1.124 (H) MM 129 (L) x 69.85 (W) x 28.55 (H).. |
| Weight | TBD* |

www.triadaudio.net